

# Mechtronics Corporate Profile

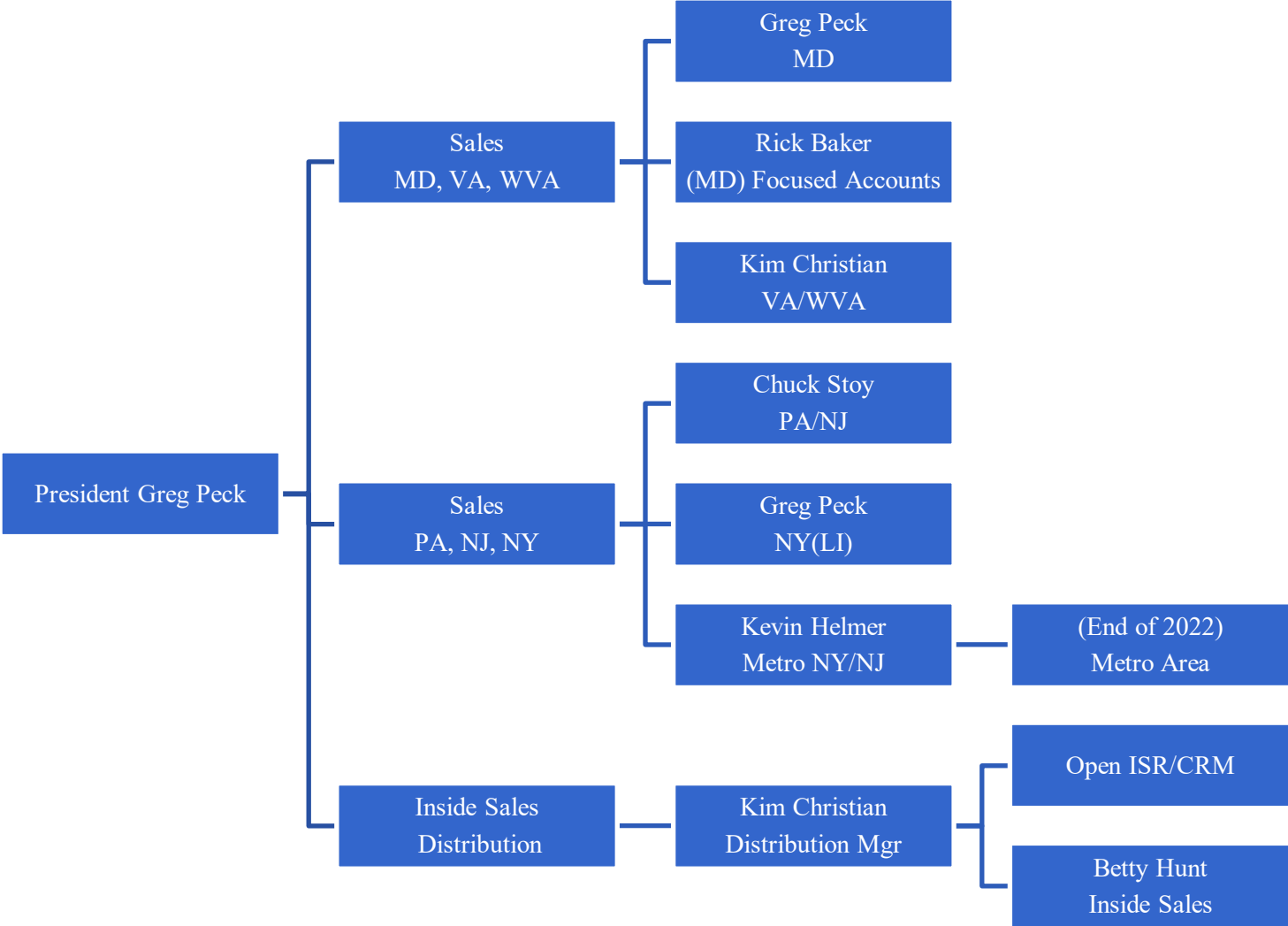


Mechtronics Group

Baltimore HQ

MD, VA, W. VA, DC, PA, NJ, NY

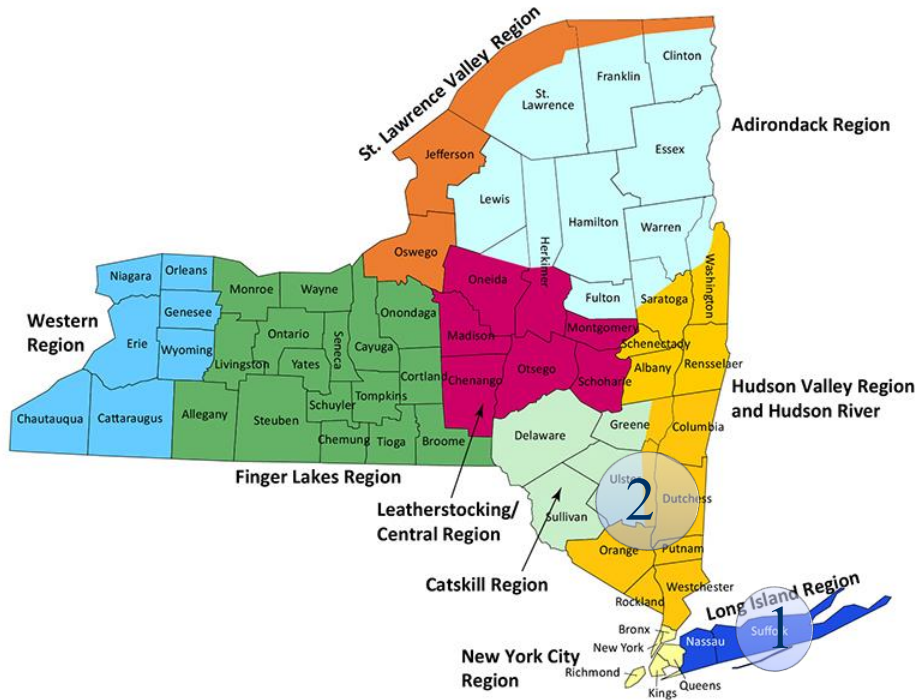
# Organizational Map



Coverage



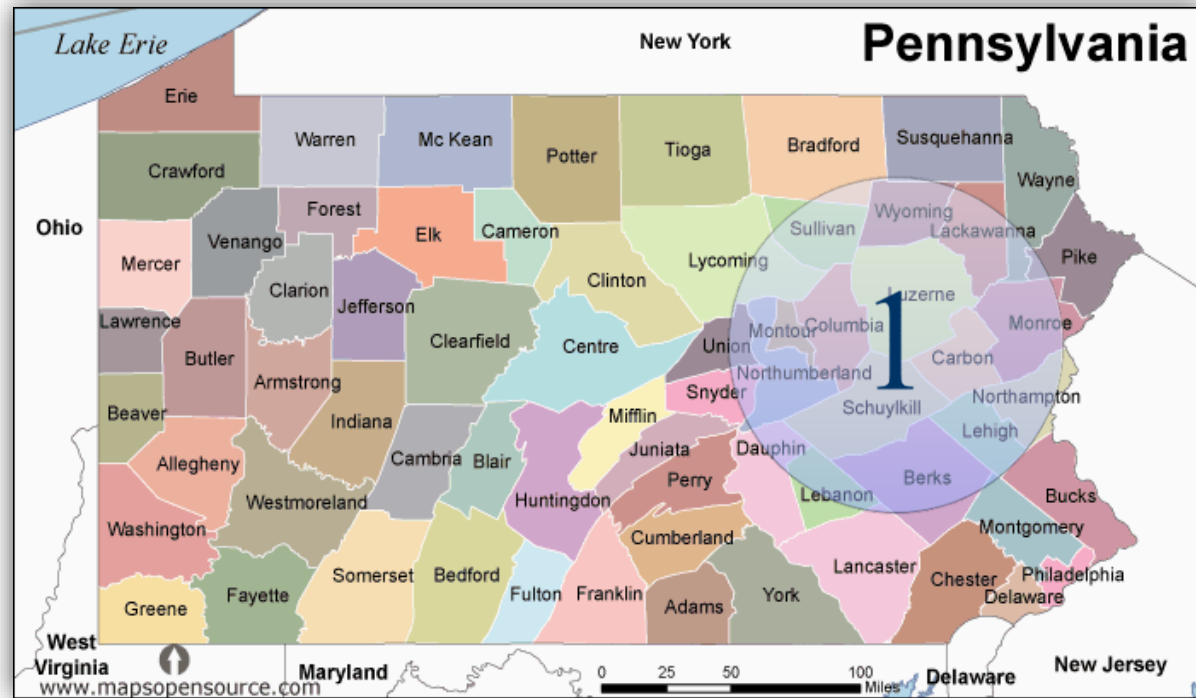
Coverage Metro - NY/NJ



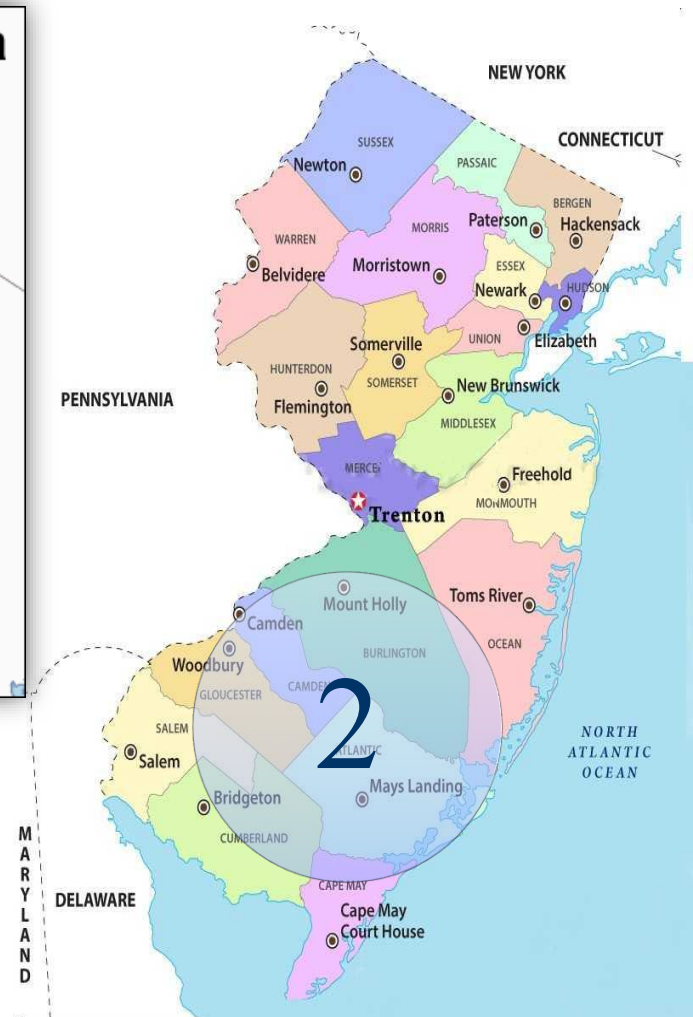
1. Greg Peck – Metro Area NY (L.I.)
2. Kevin Helmer – Metro- N.NJ/NY/NYC



# Coverage Mid-Atlantic - E.PA/S.NJ/DE

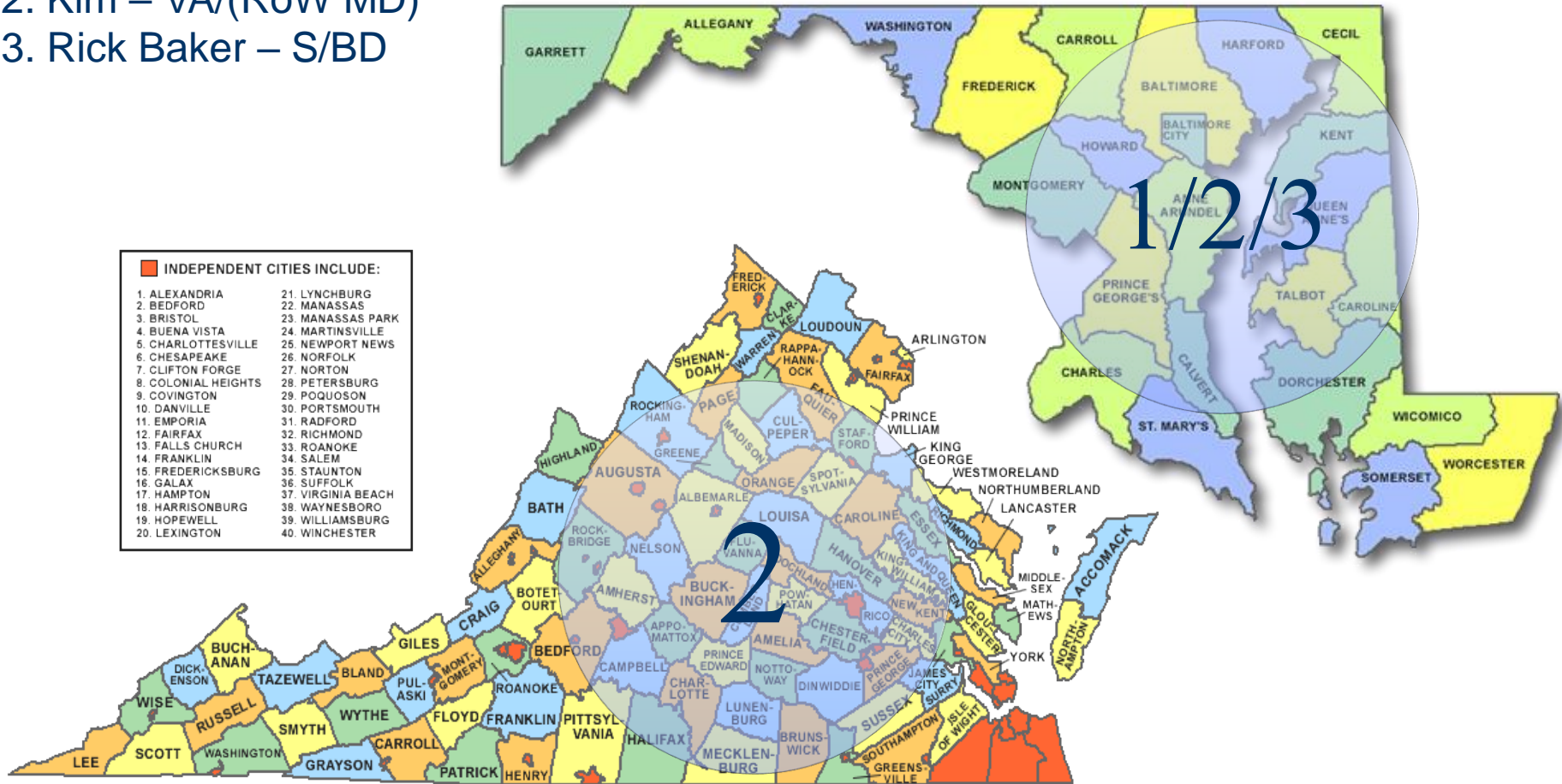


- 1. Chuck Stoy - Eastern PA
- 2. Chuck Stoy - S. NJ and Delaware



Coverage Chesapeake - MD/VA/W.VA DC

1. Greg – Key Accounts MD/DC
2. Kim – VA/(RoW MD)
3. Rick Baker – S/BD



## Launched:







### •Seamlessly Integrates with Your Email System

- Create or update a sales opportunity directly from an email while you're reading it
- Contacts automatically sync between your email and Repfabric
- Easily track sales calls by syncing your calendar
- Repfabric fully integrates with **Microsoft Outlook**
- PowerBI** Backend Reporting

## Features:

- **Eliminate Duplicate Entry with CRMSync**
- Do you have manufacturers that want you to fill out their CRM system too? Don't sweat it! Use our CRMSync® engine so it happens automatically **without you ever logging into their system.**
- We've been syncing data between reps and manufacturers for years, saving countless hours of data entry and system training for our customers.
- Recent CRM integrations to **Salesforce**, for example, for two-way sync opportunities.
- **Seamlessly Integrate Your Email Marketing**
- **Be where your customers are – their inbox!**
- Integration with popular platforms like **Salesforce Mailchimp, and Constant Contact** means you can leverage all the benefits of email to connect with your contacts **without having to manage contact lists in multiple platforms or spreadsheets.**



- Committed to the modernization of our selling practices and investing in tools needed to grow strategically.
  - Expanding our community relationships in our industry through educational and social events.
  - We engage with our customers in the most effective manner. In person, electronically, and socially.    
  - Committed to the active participation in the Rep community and the ethical practices supported by ERA.
  - We rejoined ERA in 2021.
- Expanding the Metro Market Sales Team
  - Limited/Synergistic Line Expansion focused on:
    - Industrial/Military/Medical/Consumer Markets
    - HMI-  
Display/Silicon/Embedded  
Systems/Power/Passives  
Products
    - Audio/Instrumentation/Health/  
Avionics/Industrial  
Controls/Consumer Tools &  
Electronics



# Grow your Sales!

[Mechtronics Group](#)